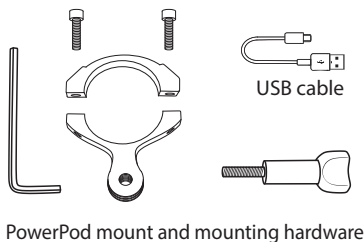
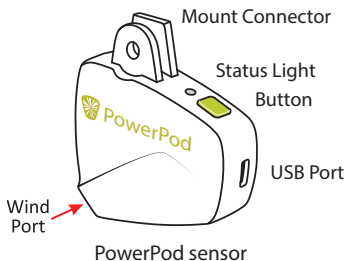


PowerPod Instructions

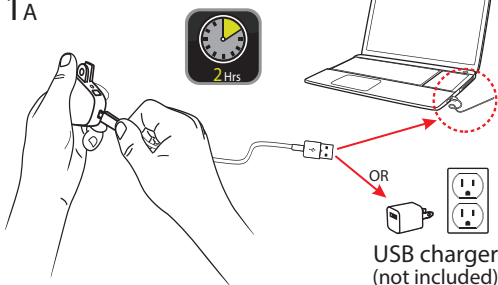


PACKAGE CONTENTS

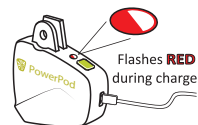


1. Charge PowerPod

1A



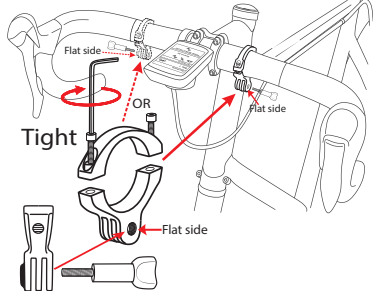
1B



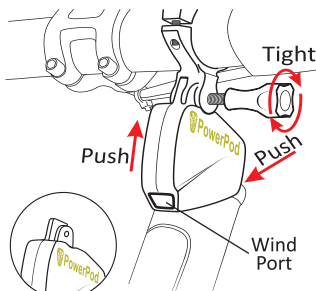
1C



2. Attach mount to bike

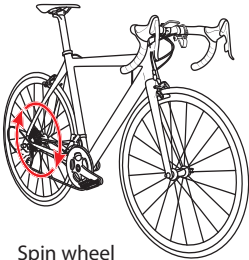


3. Attach PowerPod to mount



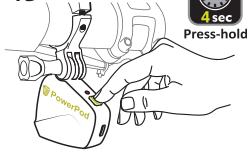
4. Pair PowerPod to ANT+ bike speed sensor

4A



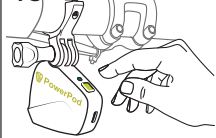
Spin wheel to awaken speed sensor

4B



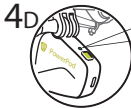
Press-hold button 4 sec. to pair

4C



Release button when **FLASHING GREEN**

4D



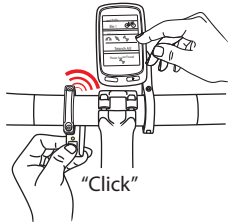
AFTER successful pairing the light is **SOLID GREEN**

4E



RED: Pairing unsuccessful

5. Pair PowerPod to your ANT+ bike computer



Refer to your ANT+ bike computer manual for pairing instructions

6. Calibrate

6A



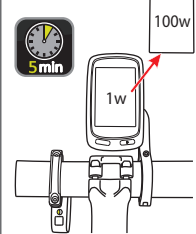
SOLID YELLOW light - ready to calibrate

6B



Light **FLASHES YELLOW** during cal.

6C During cal., watts go from 1 to 100



After 5 min., actual power shown

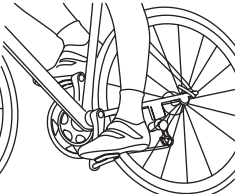
7. After Calibration

7A



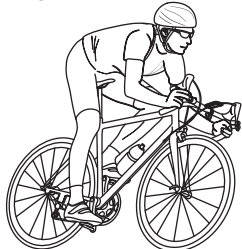
Light **FLASHES GREEN**

7B



Spin wheel, light changes to **SOLID GREEN**

7C



GREEN MEANS GO!